

# Mountain Transportation Study

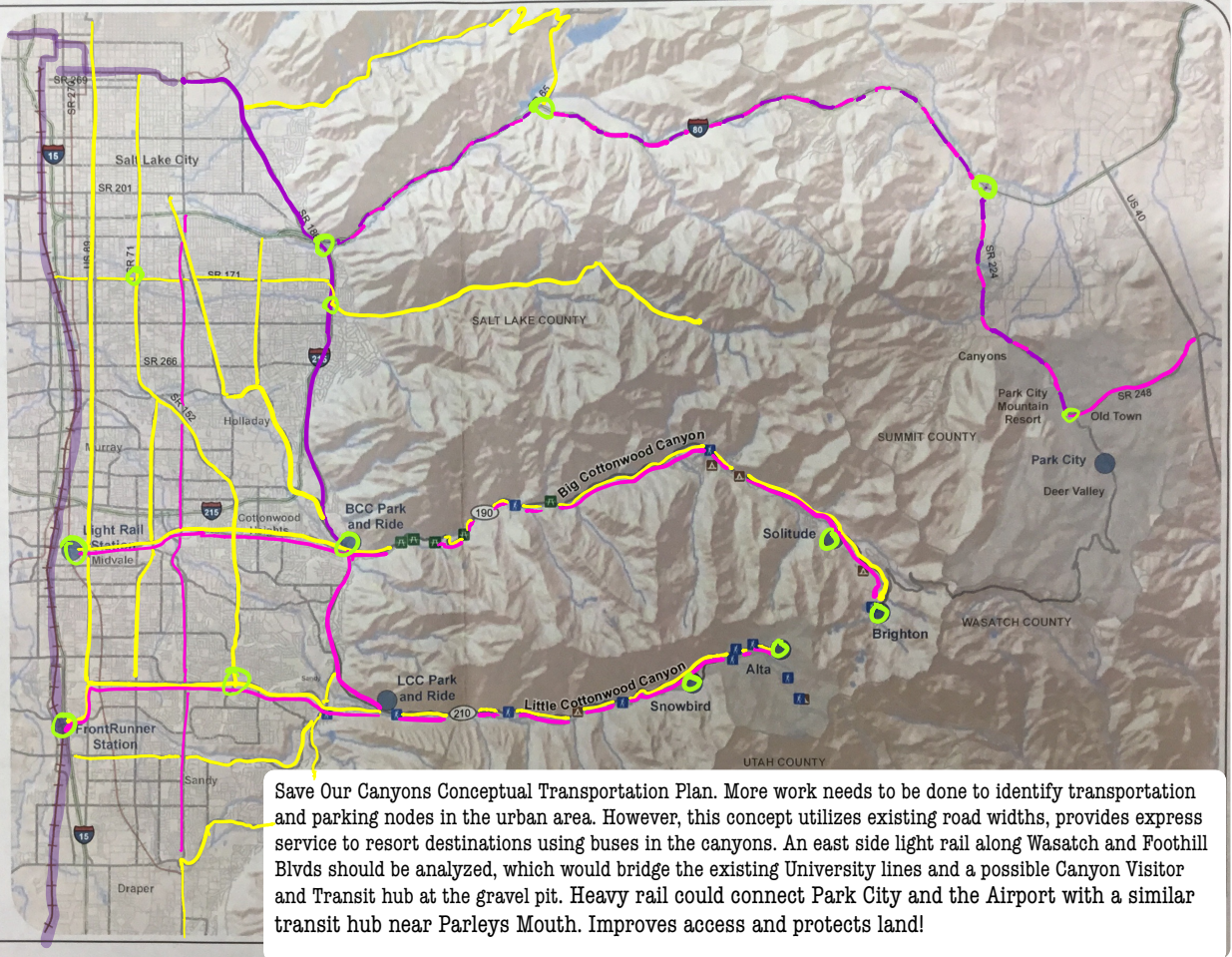
**Objective: Regional Connectivity**  
Connect canyons to destinations in Salt Lake Valley  
Connect canyons to Summit County

- Mode Choices**
- Roadway
  - Bus
  - BRT (Bus Rapid Transit)
  - Rail
  - Aerial

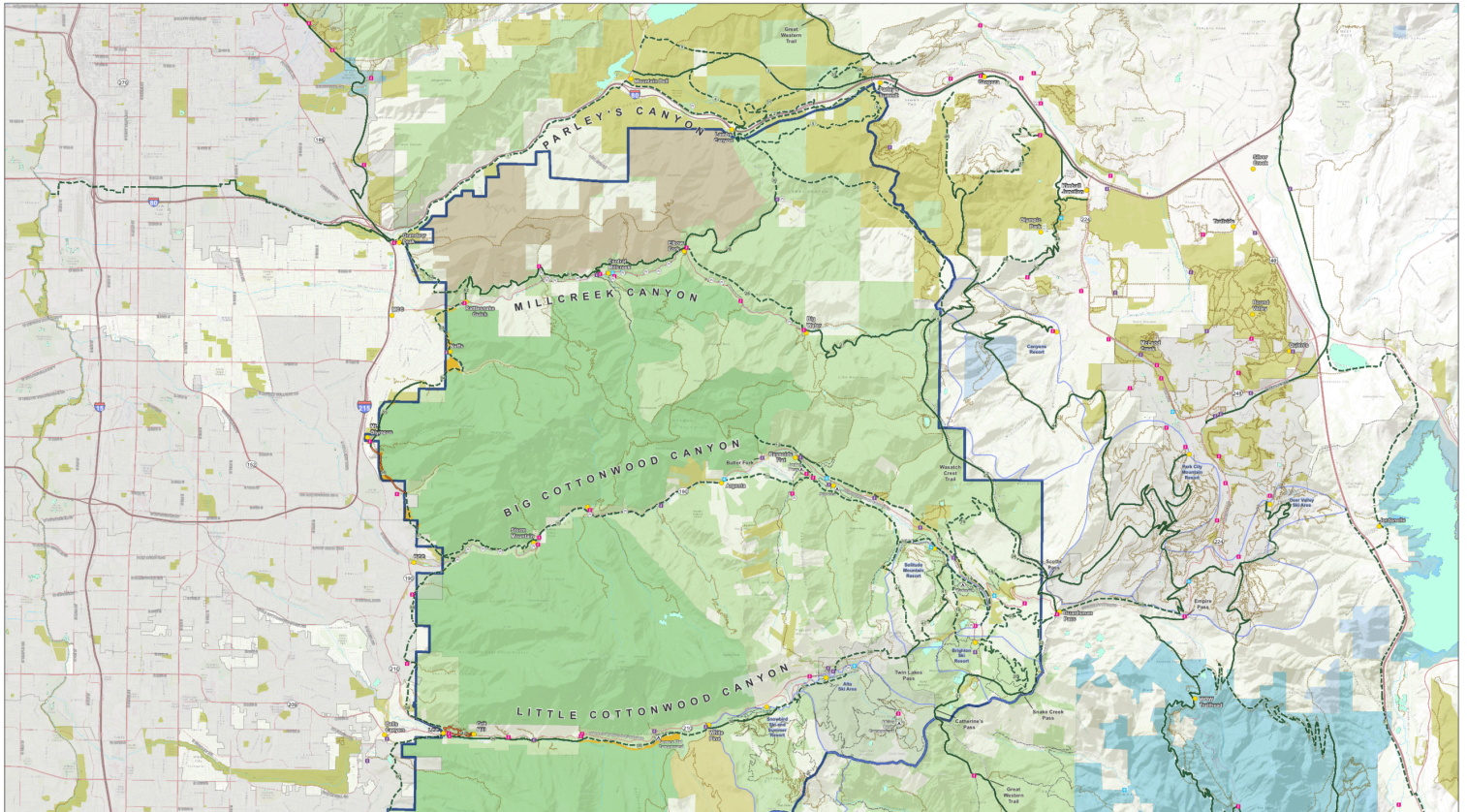
- Potential Nodes**
- Picnic Area
  - Trailhead
  - Campground
  - Commuter Rail FrontRunner South
  - Light Rail (Trax)
  - County Boundary

0 1 2 Miles

Thematic data is from the AGRC, U.S. Forest Service, and town of Alta. Map prepared by Lockheed



Save Our Canyons Conceptual Transportation Plan. More work needs to be done to identify transportation and parking nodes in the urban area. However, this concept utilizes existing road widths, provides express service to resort destinations using buses in the canyons. An east side light rail along Wasatch and Foothill Blvds should be analyzed, which would bridge the existing University lines and a possible Canyon Visitor and Transit hub at the gravel pit. Heavy rail could connect Park City and the Airport with a similar transit hub near Parleys Mouth. Improves access and protects land!



## Enhanced Regional Trail Network Phase 2



- Recreation Site**
- Campground\*
  - Picnic Site\*
  - Recreation Node
- Trailhead**
- Summer
  - Winter
  - Yearlong
- Enhanced Network -**
- Existing
  - Proposed
  - Under Construction
  - Baseline Trails
- Roads**
- Interstate\*\*
  - Highway\*\*\*
  - Major Road\*\*\*
  - FS Roads
- Designation**
- Proposed Wilderness
  - Proposed Special Management Area
  - Proposed Wilderness Boundary Adjustment
  - Existing Wilderness\*
  - City, County and Private Open Space\*\*\*
  - Resort Area\*
  - Proposed Federal Designation Boundary
- Jurisdiction**
- Private
  - State Park
  - State of Utah
  - Utah-Wasatch-Cache National Forest
  - Municipality\*\*
  - County Boundary

\* Source: USFS  
\*\* Source: State of Utah, AGRC  
\*\*\* Source: Lockheed and Salt Lake City

**DRAFT**  
May 16, 2016



