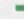


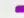
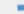


Mountain Transportation Study

Objective: Regional Connectivity

Connect canyons to destinations in Salt Lake Valley
Connect canyons to Summit County

Mode Choices

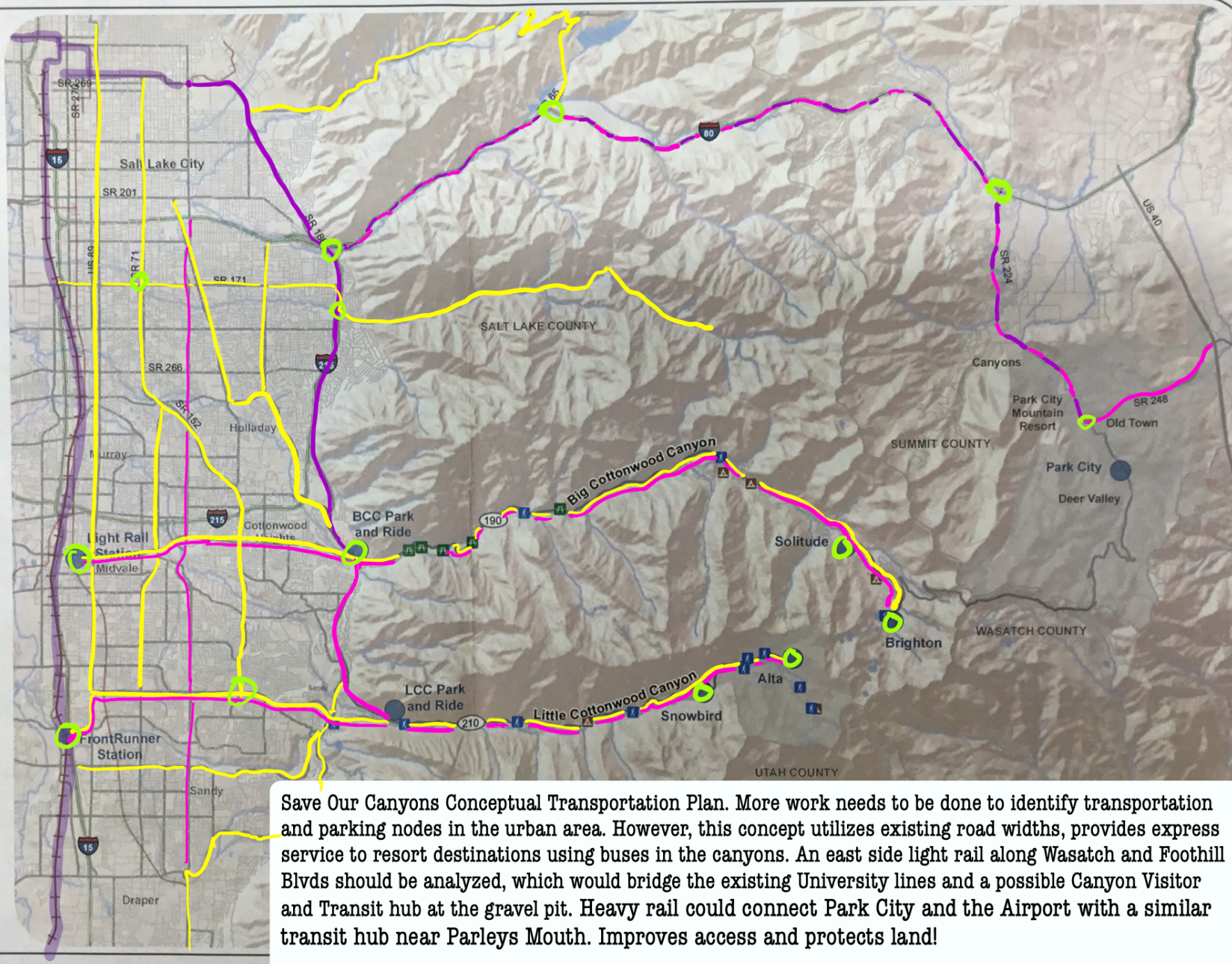
-  Roadway
-  Bus
-  BRT (Bus Rapid Transit)
-  Rail
-  Aerial

Potential Nodes

-  Picnic Area
-  Trailhead
-  Campground
-  Commuter Rail FrontRunner South
-  Light Rail (Trax)
-  County Boundary

0 1 2 Miles

Thematic data is from the AGRC, U.S. Forest Service, and town of Alta. Map prepared by Lochner.



Save Our Canyons Conceptual Transportation Plan. More work needs to be done to identify transportation and parking nodes in the urban area. However, this concept utilizes existing road widths, provides express service to resort destinations using buses in the canyons. An east side light rail along Wasatch and Foothill Blvds should be analyzed, which would bridge the existing University lines and a possible Canyon Visitor and Transit hub at the gravel pit. Heavy rail could connect Park City and the Airport with a similar transit hub near Parleys Mouth. Improves access and protects land!