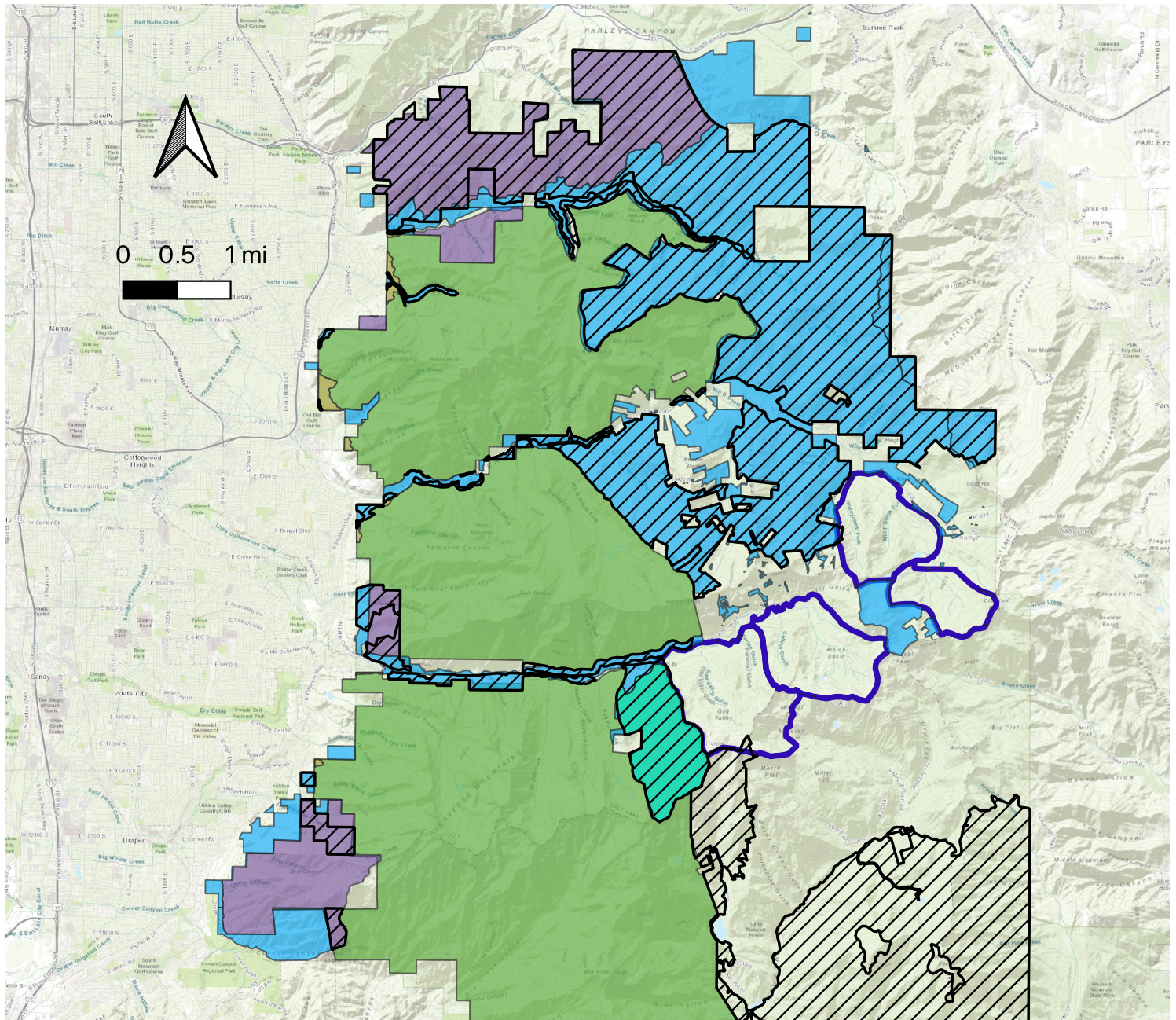


# 2001 USFS Roadless Inventory with Proposed CWNCRAs



-  USFS Roadless Inventory 2001
-  Wilderness Boundary Adjustments as Part of CWNCRAs Legislation
-  Proposed White Pine Special Management Area Within NCRA
-  Public Lands Proposed for CWNCRAs Designation
-  Proposed New & Expanded Wilderness Included in CWNCRAs
-  Already Existing Wilderness Areas
-  Alta, Brighton, Snowbird & Solitude Ski Resorts

ESRI World Topo