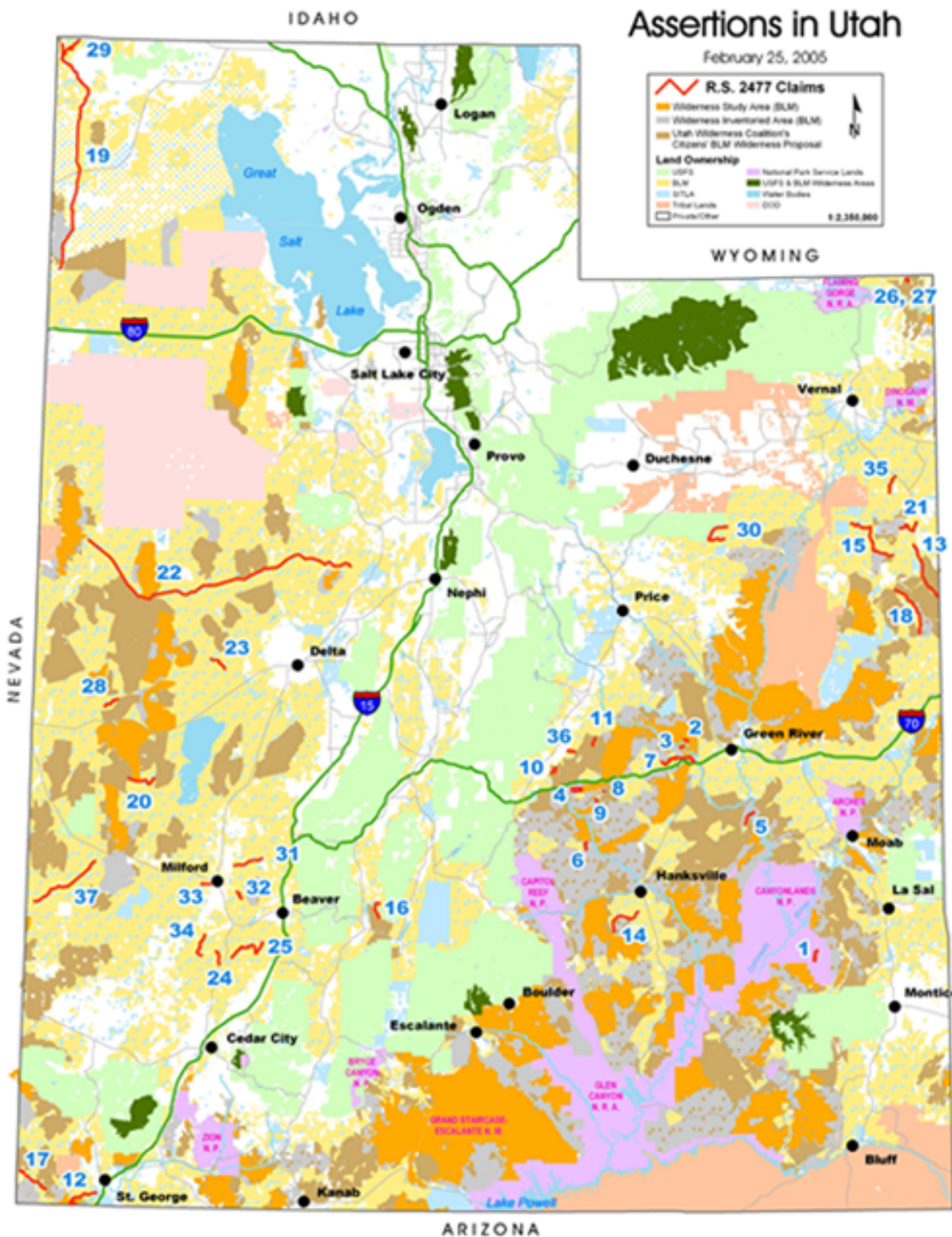


Active R.S. 2477 Assertions in Utah

February 25, 2005



Map layout by Carrie Richmond, GIS Analyst at Wild Utah Project, using ArcMap 8.3. Data sources: R/S2477 Claims compiled from Utah BLM claim datasets, State of Utah AGRC Trns dataset, USGS 24k DOGs and 100k DRGs and IWAs, Utah BLM, UWC Proposal, Wild Utah Project, counties, major roads, and land ownership, State of Utah AGRC. Disclaimer: WUP uses the most current and complete data available to us. GIS data product accuracy may vary. They may be developed from sources of differing accuracy, accurate only at certain scales, based on modeling or interpolation, incomplete while being created or revised, etc. Using GIS products for purposes other than those for which they were created or intended may yield inaccurate or misleading results. This information was released on March 1, 2005. Map commissioned by Earthjustice and The Wilderness Society.