

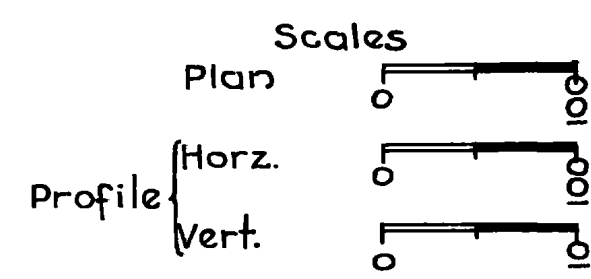
STATE OF UTAH STATE ROAD COMMISSION

PLANS OF PROPOSED STATE ROAD

FEDERAL AID PROJECT

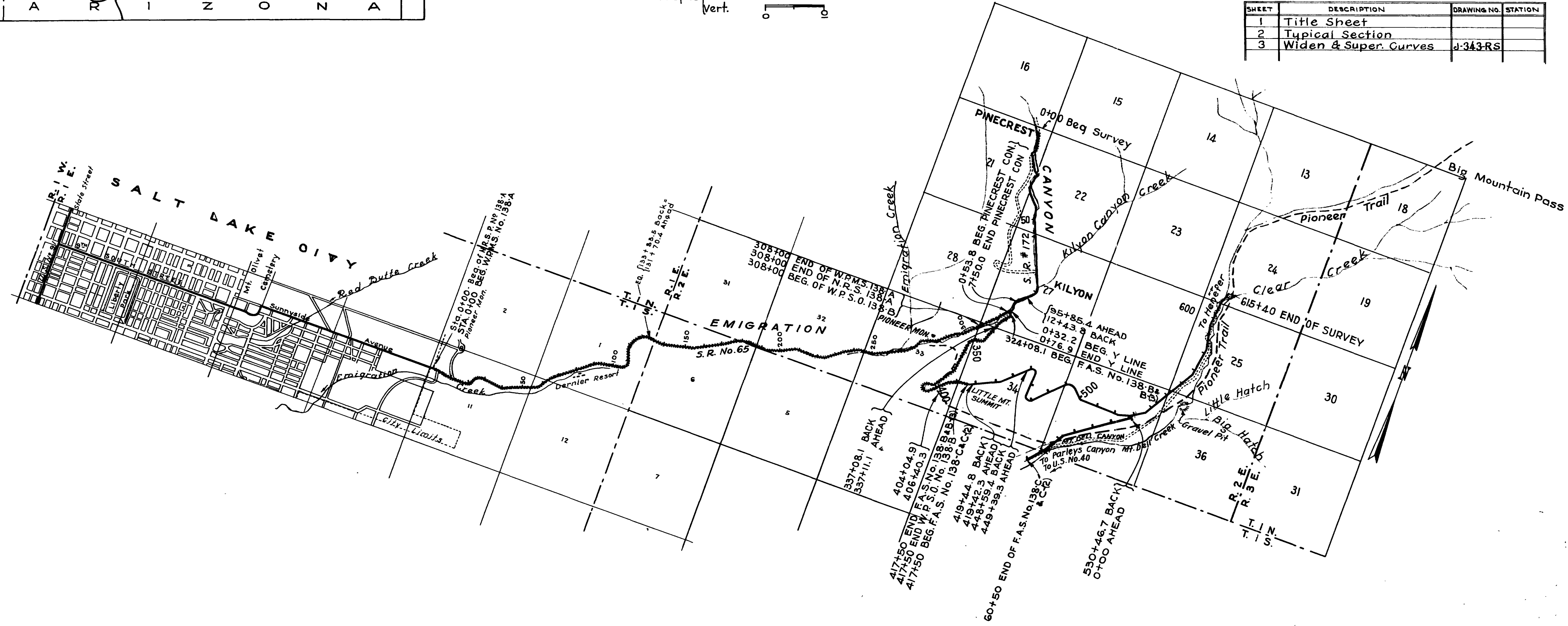
U. S. P. W. P. No. N. R. S. 138-A Length 5.859 Mi.
Emigration Canyon

U. S. W. P. H. P. No. W. P. S. O. 138-B LENGTH 2.169 MILES
F. A. S. No. 138-C LENGTH 3.270 MILES
F. A. S. No. 138-B LENGTH 1.733 MILES
F. A. S. No. 138-C(2) LENGTH 3.270 MILES
F. A. S. No. 138-B(3) LENGTH 1.733 MILES



INDEX TO SHEETS F.A.S.P. No. 138-C(2)

SHEET	DESCRIPTION	DRAWING NO.	STATION
1	Title Sheet		
2	Typical Section		
3	Widen & Super. Curves	J-343RS	



INDEX TO SHEETS F.A.S.P. No. 138-B(3)

SHEET	DESCRIPTION	DRAWING NO.	STATION
1	Title Sheet		
2	Typical Section		
3	Widen & Super. Curves	J-343-R	

INDEX TO SHEETS W.P.S.O. 138-B

SHEET	DESCRIPTION	DRAWING	STATION
1	Title Sheet		
2	Typical Section		
3-6	Plan & Profile		
7A	F.A.P. & R. of W. Mkrs.	J-391-R	
7B	Super. & Widen Curves	J-343-R	
7C	Strutting for large C.M.P.	J-390	
1-23	X-Sections		

INDEX TO SHEETS F.A.S.P. No. 138-B

SHEET	DESCRIPTION	DWG.	STA.
1	Title Sheet		
2	Typical Section		
3	Super. and Widen Curves	J-343-R	
4	Std. Guard Rail Type 'P'	V-108-P	

INDEX TO SHEETS N.R.S.P. No. 138-A

SHEET NO.	DESCRIPTION	DRAWING NO.	STATION
1	Title Sheet		
2	Typical Section	Type W-1	
3-12	Plan & Profile		
13	6'x6'x48'-6" Conc. Box	SC 600L13	195+80
14	6'x6'x60'-0" " "	SC 600L14	211+00
15	6'x6'x36'-6" " "	SC 600L17	233+35
16	6'x6'x36'-4" " "	SC 600L11	258+00
17	6'x6'x36'-4" " "	SC 600L11	273+55
18	4'x4'x30'-6" " "	SC 400L5	297+69
19	4'x4'x45'-6" " "	SC 400L6	307+15
20	Guard Rail	V-108	
21-A	Std. Pipe Headwall	J-500	
21-B	" " " " 45° Skew	J-500-45	
21-C	Superelevation & Widening	J-343-R	
21-D	F.A.P. & R. of Way Markers	J-391-R	
1-13	Cross Sections		

INDEX TO SHEETS F.A.S. No. 138-C

SHEET	DESCRIPTION	DWG.	STA.
1	Title Sheet		
2	Typical Section		
3-8	Plan and Profile		
9A	Widen and Super. Curves	J-343RS	
9B	F.A.P. Rt/W. Markers	J-391-R	
9C	Rt/W. Fence	J-44G	
1-31	X-Sections		

APPROVED

Erab. Knoutter
CHIEF ENGINEER

RECOMMENDED FOR APPROVAL

DISTRICT ENGINEER
PUBLIC ROADS ADMINISTRATION
FEDERAL WORKS AGENCY

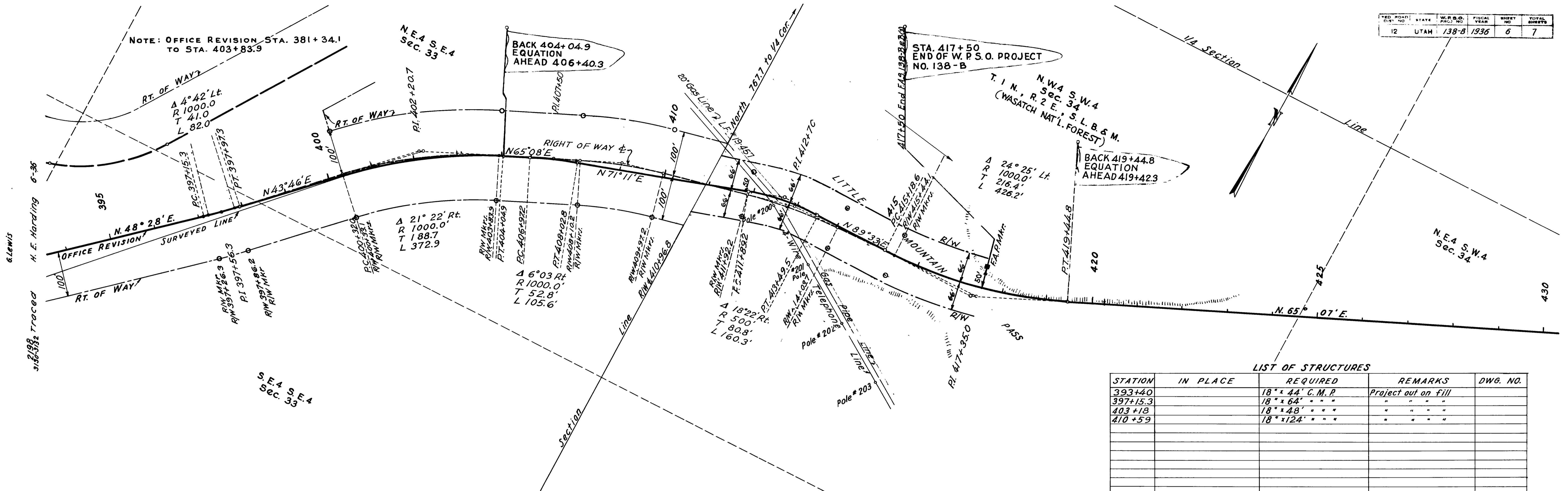
RECOMMENDED FOR APPROVAL

CHIEF WESTERN REGION
PUBLIC ROADS ADMINISTRATION
FEDERAL WORKS AGENCY

APPROVED

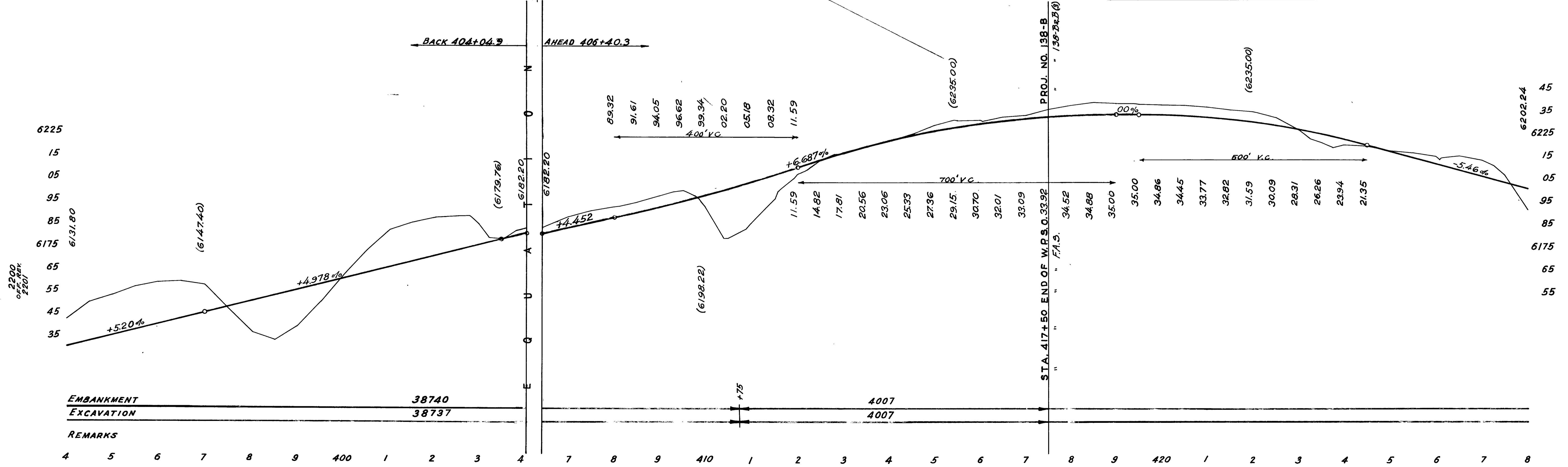
COMMISSIONER
PUBLIC ROADS ADMINISTRATION
FEDERAL WORKS AGENCY

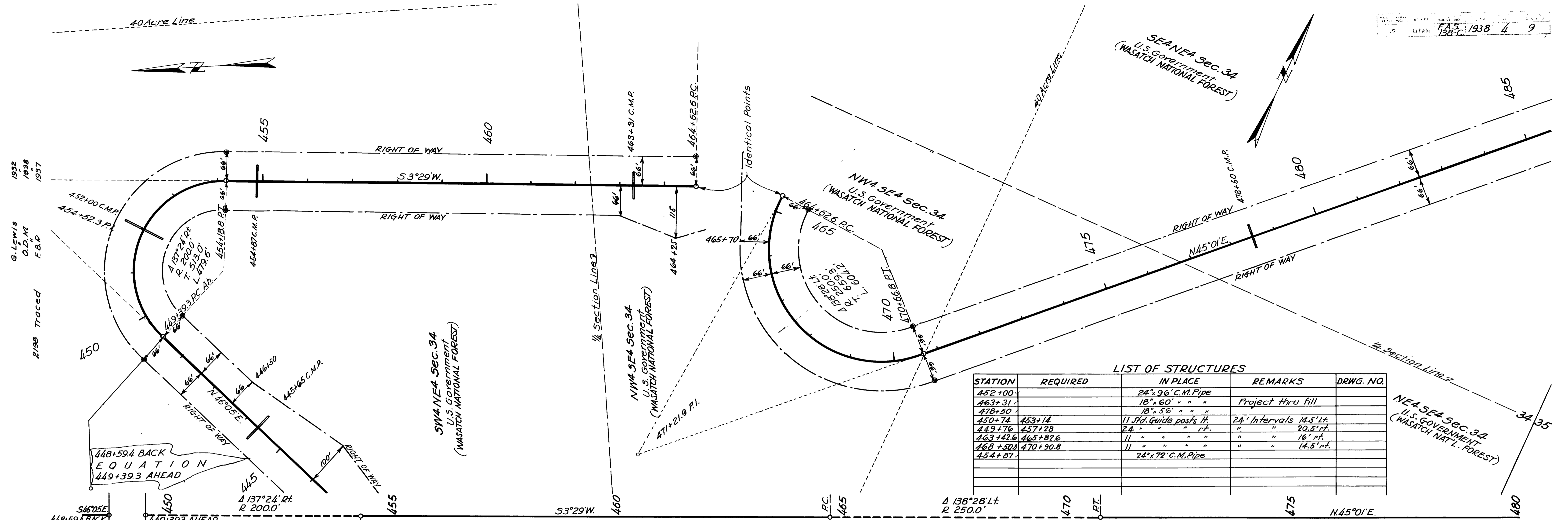
FED. ROAD DIST. NO.	STATE	W.P.S.O. PROJ. NO.	FISCAL YEAR	SHEET NO.	TOTAL SHEETS
12	UTAH	138-B	1936	6	7



LIST OF STRUCTURES

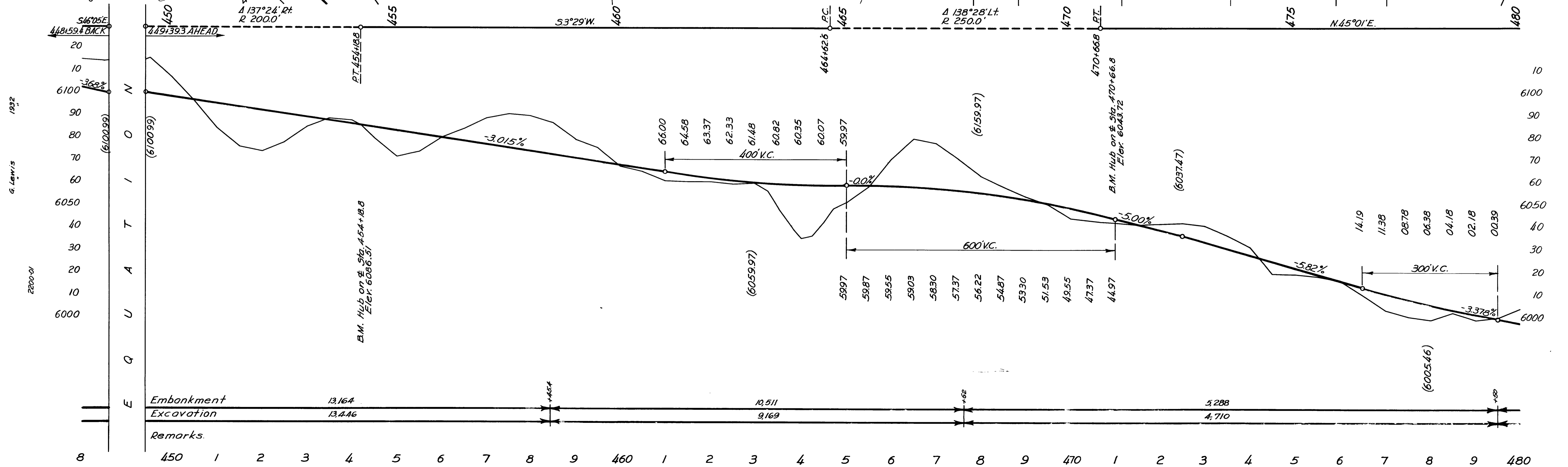
STATION	IN PLACE	REQUIRED	REMARKS	DWG. NO.
393+40		18' x 44' C.M.P.	Project out on fill	
397+15.3		18' x 64' " " "	" " " "	
403+18		18' x 48' " " "	" " " "	
410+59		18' x 124' " " "	" " " "	





LIST OF STRUCTURES

STATION	REQUIRED	IN PLACE	REMARKS	DRWG. NO.
452+00		24" x 96" C.M. Pipe		
463+31		18" x 60" " " "	Project thru fill	
478+50		18" x 56" " " "		
450+74	453+14	11 std. Guide posts ft.	24' Intervals 14.5' ft.	
449+76	457+28	24 " " " " "	" " 20.5' ft.	
463+42.6	465+82.6	11 " " " " "	" " 16' ft.	
468+50.8	470+90.8	11 " " " " "	" " 14.5' ft.	
454+87		24" x 72" C.M. Pipe		

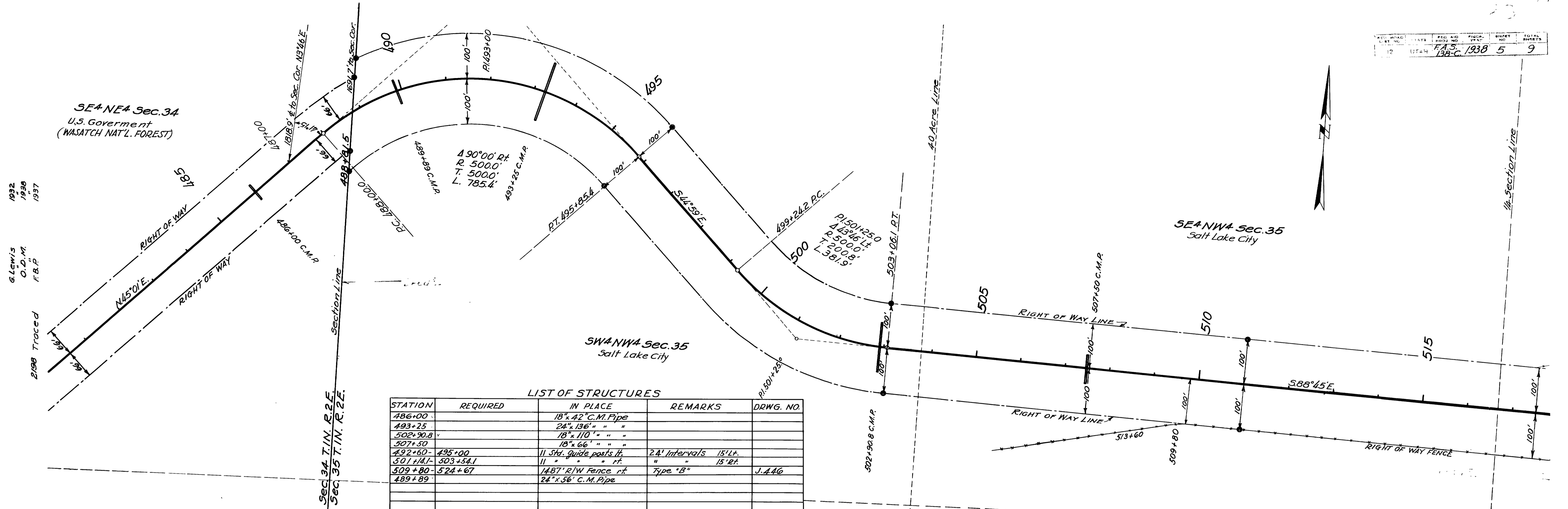


Embankment	13,164	10,511	5,288
Excavation	13,446	9,169	4,710
Remarks:			

G. Lewis
O.D.M.
F.B.P.
1932
1938
1937

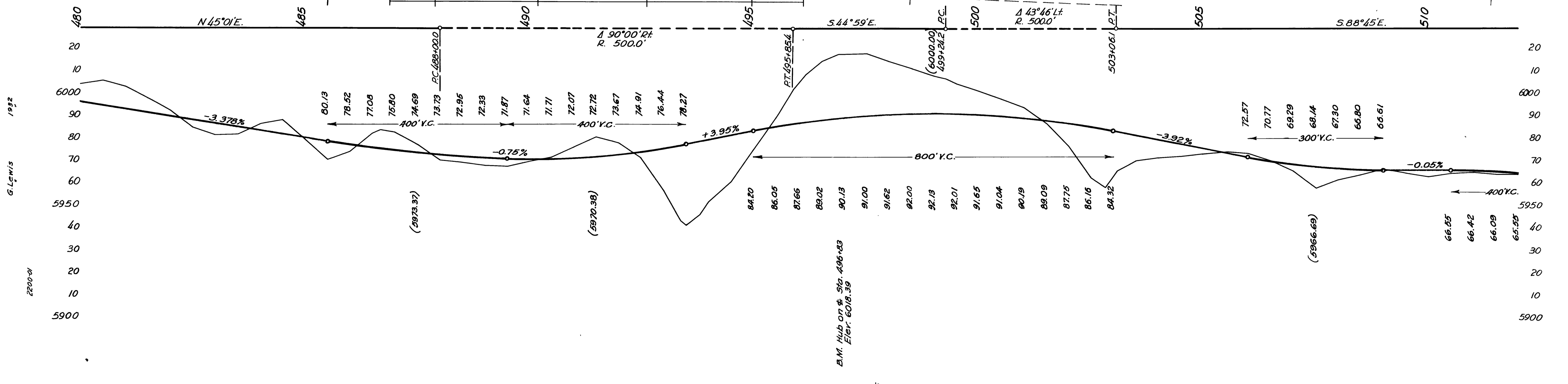
G. Lewis
2200-01

8 450 1 2 3 4 5 6 7 8 9 460 1 2 3 4 5 6 7 8 9 470 1 2 3 4 5 6 7 8 9 480

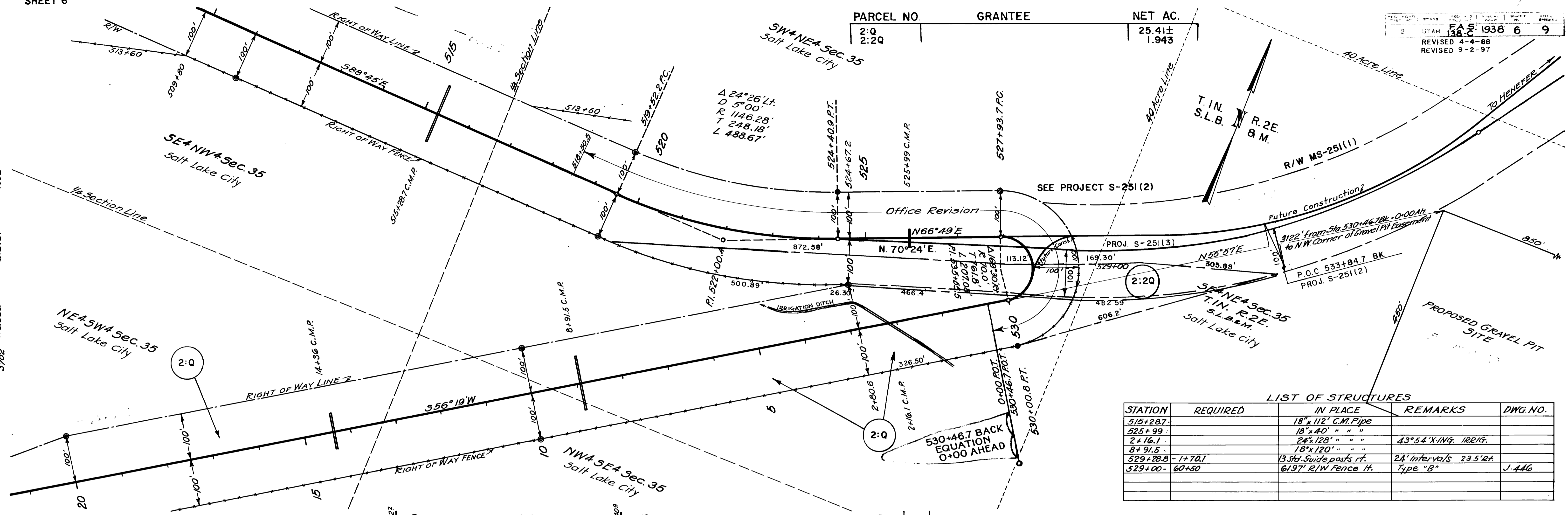


LIST OF STRUCTURES

STATION	REQUIRED	IN PLACE	REMARKS	DRWG. NO.
486+00		18" x 42" C.M. Pipe		
493+25		24" x 136" " "		
502+90.8		18" x 110" " "		
507+50		18" x 66" " "		
492+60 - 495+00		11 Std. Guide posts ft.	24' Intervals 15' Lt.	
501+14.1 - 503+54.1		11 " " " ft.	" " " 15' Rt.	
509+80 - 524+67		1487' R/W Fence ft.	Type "B"	J.446
489+89		24" x 56" C.M. Pipe		

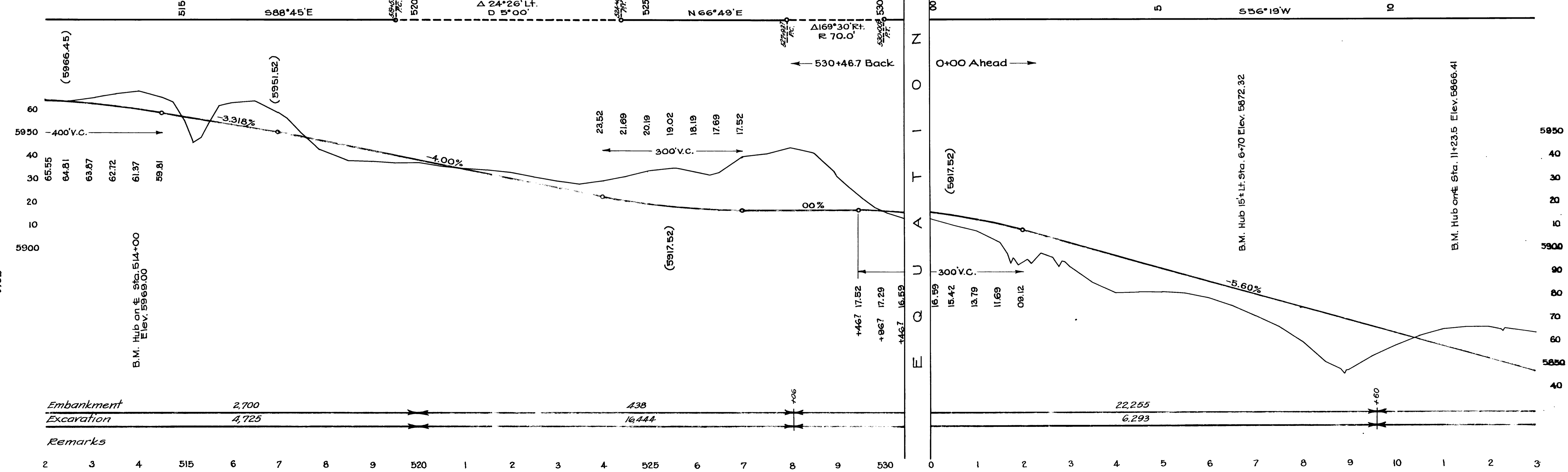


Embankment	6,879	+26	12,997	+25.5	11,042	+70						
Excavation	6,357		12,201		10,574							
Remarks												
480	1	2	3	4	5	6	7	8	9	510	1	2



LIST OF STRUCTURES

STATION	REQUIRED	IN PLACE	REMARKS	DWG. NO.
515+28.7		18" x 112' C.M. Pipe		
525+99		18" x 40' " " "		
2+16.1		24" x 128' " " "	43° 54' X-ING. 100' G.	
8+91.5		18" x 120' " " "		
529+28.8	-1+70.1	13 Std. Side posts rt.	24' Intervals 23.5' rt.	J. 446
529+00	60+50	61.97' R/W Fence H.	Type "B"	



Embankment	2,700	438	22,255
Excavation	4,725	16,444	6,293
Remarks			

1932
 1937
 1938
 G.S.S.
 C.S.S.

2200
 3702

1932
 1937
 1938
 G.S.S.
 C.S.S.

2200
 3702